

# ADMG 479 – Project Management Maturity

General Course Syllabus

The logo for the International Association of Project Management (ITAM) is displayed in white capital letters on a dark blue background. The letters are bold and sans-serif. Behind the text, there is a faint, circular graphic element consisting of concentric lines and a central point, resembling a target or a stylized globe.

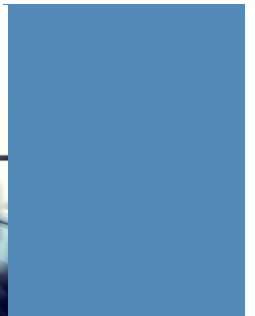
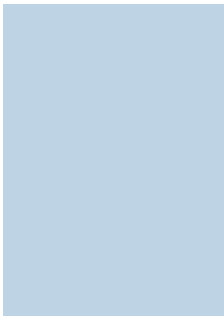
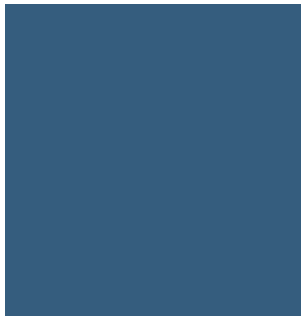
## Department of Information Technology and Administrative Management



Students will assess project management maturity processes through the use of established industry best practices. Course will be offered every year. Course will not have an established scheduling pattern.

**Prerequisites: ADMG 475**

**Credits: 4**



### Students will be able to . . .

Apply project management maturity models to evaluate project organizations.

Apply Agile project processes to a given scenario.

Demonstrate how to manage a project across all the project lifecycle

Evaluate team performance and team building techniques.

Describe and apply the PMI Code of Ethics and Professional Responsibility to given project scenarios.

### Assessments

Discussions and written assignments.

Discussions and written assignments.

Discussions and written assignments.

Discussions and written assignments.

Discussions and written assignments.

*Specific course faculty and materials will vary by quarter. Current information can be found on [my.cwu.edu](http://my.cwu.edu).*

*ITAM classes are often offered in online, hybrid or traditional formats. Visit [my.cwu.edu](http://my.cwu.edu) for more details or contact our office at [ITAMInfo@cwu.edu](mailto:ITAMInfo@cwu.edu).*



### University Policy on Academic Integrity

Academic Integrity is a standard set for this course. Students are expected to complete all of their coursework and assignments using their original words and ideas and will properly cite the words and ideas of

others. Students are also expected to be honest in their interactions with the instructor. A student found to have not upheld these expectations is subject to failing this course and shall be subject to disciplinary action or sanction. The University catalog defines the term "academic dishonesty" in all its forms including, but not limited to:

- cheating on tests;

### University Policy on Special Needs

If you have a disability that may prevent you from meeting course requirements, contact the instructor immediately to file a Student Disability Statement and to develop an Accommodation Plan. Course requirements

will not be waived but reasonable accommodations will be developed to help you meet the requirements. You are expected to work with the instructor and the CWU Disability Support Specialist to develop and implement a reasonable Accommodation Plan. For more information please visit: [www.cwu.edu/disability-support/](http://www.cwu.edu/disability-support/)

- copying from another student's test paper;
- using materials during a test not authorized by the person giving the test;
- collaboration with any other person during a test without authority;
- knowingly obtaining, using, buying, selling, transporting, or soliciting in whole or in part the contents of an un-administered test or information about an un-administered test; bribing any other person to obtain an un-administered test or information about an un-administered test; substitution for another student or permitting any other person to substitute for oneself to take a test; plagiarism" which shall mean the appropriation of any other person's work and the unacknowledged incorporation of that work in one's own work offered for credit;
- "Collusion" which shall mean the unauthorized collaboration with any other person in preparing work offered for credit.

## Canvas TurnItIn

The TurnItIn feature of Canvas helps students learn to use sources and citations appropriately. TurnItIn matches the material in student papers against material on the Internet and in our database of CWU

papers. Representing the words or ideas of someone else as your own is a violation of the CWU Student Conduct Code and a serious infraction in this course. If you have questions about appropriate ways to include the words or ideas of other people in your papers, contact the instructor. Papers submitted to TurnItIn are added to the database of papers. Your instructor has the option of what papers and assignments may be submitted and/or randomly submitted to TurnItIn.

## University Writing Center

Central Washington University is a community of scholars and writers who are supported by the University Writing Center. Peer consultants guide students of all disciplines and all levels toward communication that will be effective in a global and diverse environment. Visit: [www.cwu.edu/learning-commons/university-writing-center](http://www.cwu.edu/learning-commons/university-writing-center) for more information.

## We are here to help!

Call: 509.963.2611

Email: [ITAMInfo@cwu.edu](mailto:ITAMInfo@cwu.edu)

Explore: [www.cwu.edu/it-management](http://www.cwu.edu/it-management)

Visit: ITAM Main Office, Shaw Smyser 223, Central Washington University,  
Ellensburg WA 98926

**Quality Teaching | Personal Advising | High-Demand Programs**