



# **Student Engagement and Success**

**February 23, 2023**

# In appreciation

- Division of Student Engagement and Success
- SES Interim Leadership Team
- SES Reorganization Process



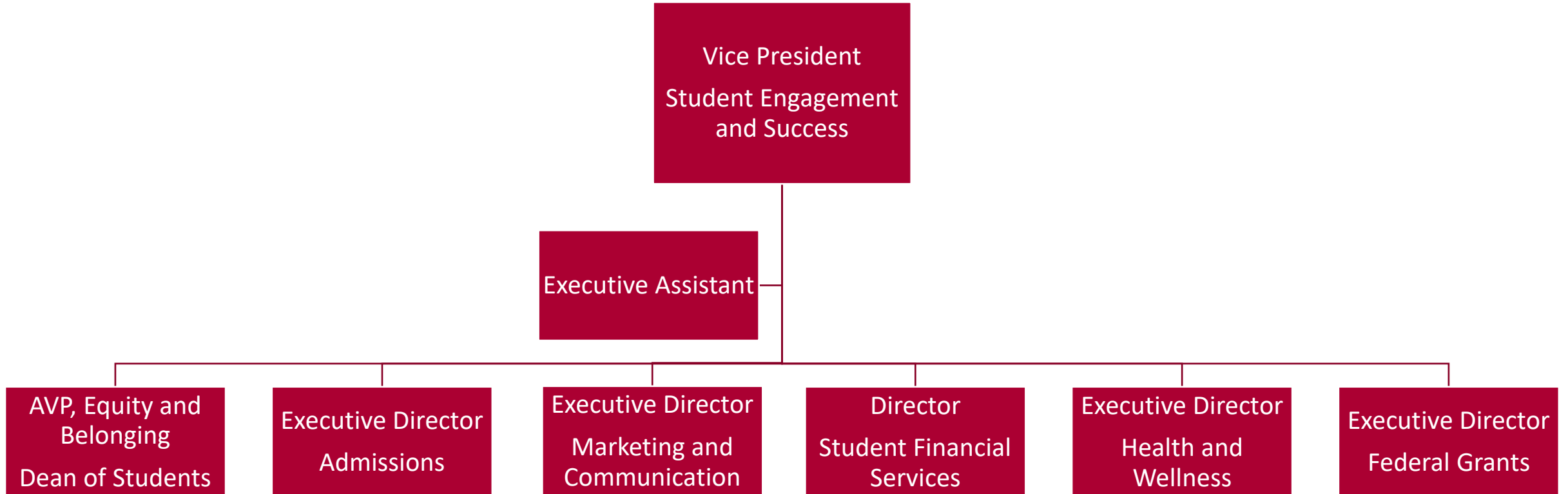
# New Vice President, Student Engagement and Success

- Dr. Margaret Ortega
  - Start Date: June 1, 2023
- Previous Experience
  - Dean of Student Services and Special Programs, California Community Colleges Chancellor's Office
  - Director of Graduate Diversity, Recruitment and Retention, University of California, Santa Cruz
  - Director of Student Programs and Activities Center, University of California, Davis
  - Director, Student Judicial Affairs, University of California, Santa Cruz

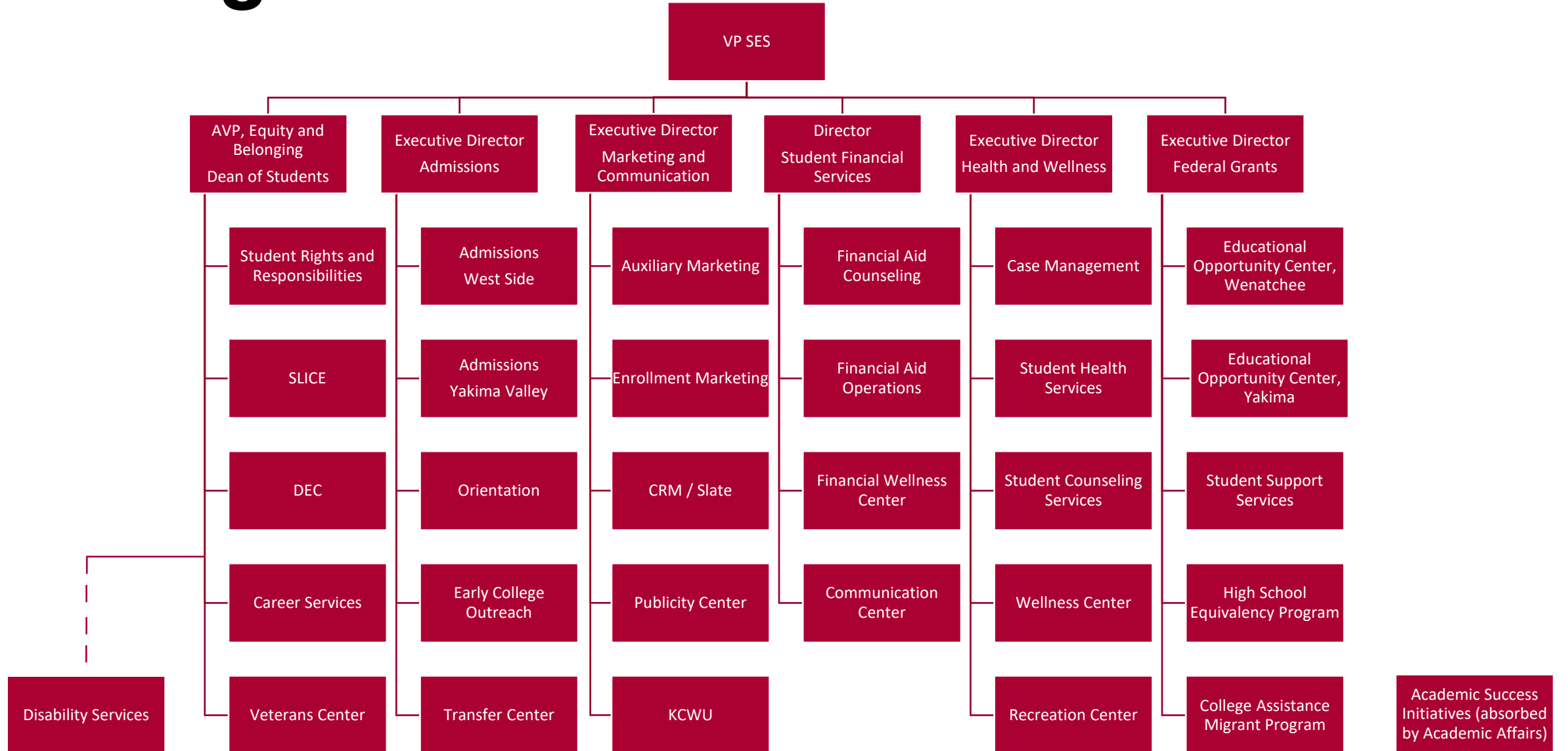
# New Organizational Structure

- Vision-aligned
  - CWU: to be a model learning community of equity and belonging
  - SES: to support equity, build community and cultivate belonging throughout the student journey
- Hybrid model
  - VP in close proximity to offices involved in recruitment and admissions
  - 1 AVP to align with other divisions and work across divisions
    - AVP focused on equity and belonging
    - AVP focused on institutional priorities (e.g., becoming an HSI)
  - Executive Directors with similar numbers of offices
    - Executive Directors reporting to VP (or AVP)
    - Directors reporting to Executive Directors

# SES Leadership Team



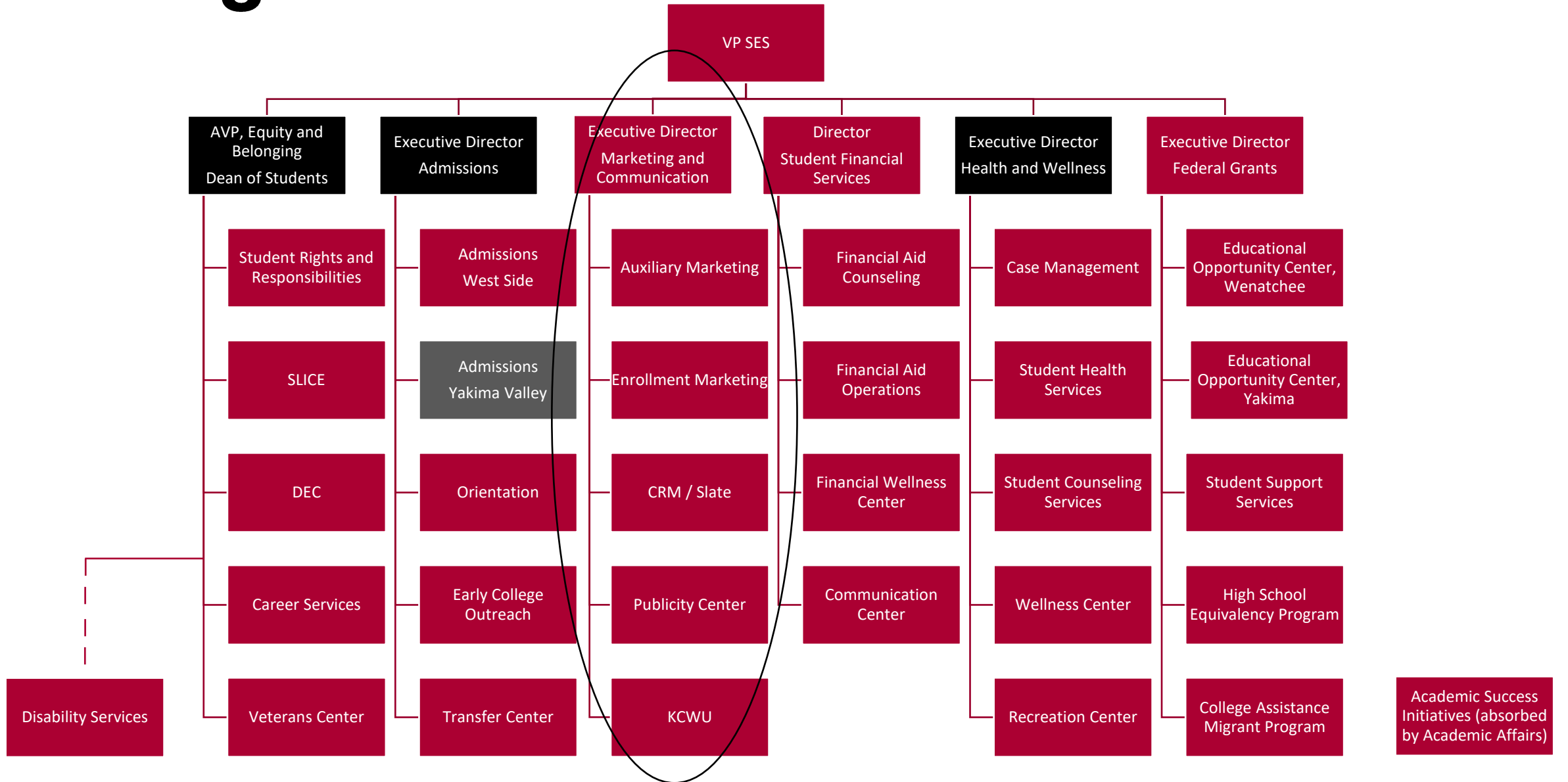
# SES Organization



# New Organizational Structure

- July 1 Implementation
- Interim Roles until searches can be launched
  - Executive Director of Admissions – Myndee Ronning
  - Executive Director of Health and Wellness – Joy Stochosky
  - Director of Yakima Admissions – Andres Moreno Benito
  - Associate Vice President/Dean of Students – Lucha Ortega
- Issues to be engaged in Winter/Spring 2023
  - Location of Marketing and Communication
  - Location of Publicity Center and KCWU

# SES Organization





# New Organizational Structure

- Issues to be engaged in AY 2023-24
  - Role of the Centers and of the Transfer Center
  - Length of other Interim Director Appointments to stagger searches and allow the new VP to integrate into SES
    - Career Center
    - Diversity and Equity Center
    - Orientation
    - Case Management
    - Recreation
    - Other

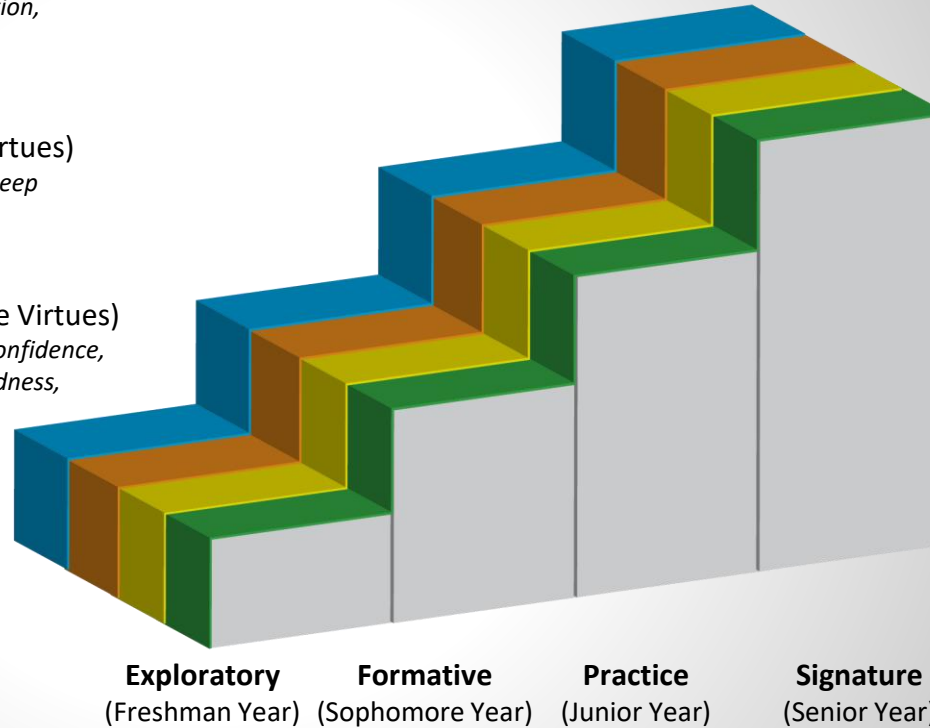
Intentional and Developmental Model for Character Development connected to Community

**Intellectual Capacities (Intellectual Virtues)**  
*critical thinking, problem solving, communication, curiosity, judgment, independent thinking*

**Social-Emotional Capacities (Moral Virtues)**  
*care, compassion, honesty, integrity, justice, deep listening, humility, gratitude*

**Psychological Capacities (Performance Virtues)**  
*resilience, persistence, drive, determination, confidence, collaboration, courage, patience, open-mindedness, reflection*

**Civic Capacities (Civic Virtues)**  
*civil dialogue, civic agency, community engagement, service, volunteering*



Integrated and Engaged Life (Practical Wisdom)

- Live in service to others
- Make right choices through reflection and experience
- Live in paradox:
  - ✓ Confidence and Humility
  - ✓ Drive and Patience
  - ✓ Critical Thinking and Deep Listening
  - ✓ Reflection and Decisiveness
  - ✓ Open-mindedness and self-determination



Successful Individuals  
 Thriving Communities  
 Flourishing Society

- Enfolding Students in a Culture of Integrity, Equity and Belonging**
- Orientation
  - Peer Mentoring
  - Residence Life
  - Career Services
  - Success Coaches
  - Supplemental Instruction
  - Service Learning
  - Community Engagement
  - Applied Learning

# Framework for Integrated and Engaged Learning In an Institution of Integrity, Equity, and Belonging

**CWU**

TM