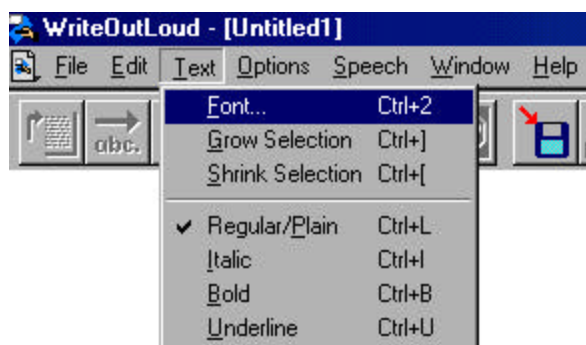


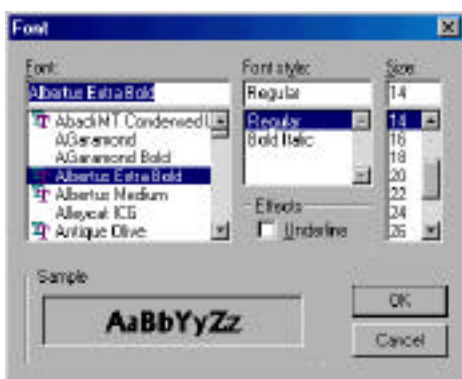
Setting the Default Font in Write: OutLoud

We have discovered that Hewlett Packard printers install their own proprietary fonts. Some of you are getting really strange looking fonts when you print using the HP LaserJet 2100. The Write: OutLoud software does not install any fonts, it only uses fonts that are available on your system. WOL selects as its default font Arial and would you believe that is one of the fonts your printer doesn't like!

Here is the workaround.



1. Click on Text (in the Menu Bar) and select Font.



2. Select a new font. Make sure it is not Arial. Click OK.

3. Click on the Options button in the Menu Bar. Click on "Save As Default".

