

S O C I O L O G Y

What can you do with a Ph.D. in Sociology?

University and College teaching
Analyzing and directing policy and research
Consulting
Survey research
Gerontology
Urban Planning
Community Developing
Criminology
Demography
Counseling
Therapy
Program Directing at a Social Service Agency

Today, sociologists embark upon literally hundreds of career paths. Although teaching and conducting research remains the dominant activity among the thousands of professional sociologists today, other forms of employment are growing both in number and significance. In some sectors, sociologists work closely with economists, political scientists, anthropologists, psychologists, social workers, and others, reflecting a growing appreciation of sociology's contributions to interdisciplinary analysis and action.

What Does Central Have to Offer?

- The **McNair Scholars Program** that pairs students in one-on-one faculty research mentorships and provides guidance through the graduate school application process, including GRE preparation!
- **Internship and research opportunities** that help build graduate school resumes
- Opportunities to present scholarly research at CWU's **SOURCE** event
- A **Sociology Honors Program**
- Affiliated programs in **Women's Studies** and **American Indian Studies**
- **Study Abroad Opportunities**

Some Helpful Links :

American Sociological Association

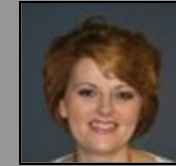
<http://www.asanet.org/>

The Pacific Sociological Association

<http://www.pacificsoc.org/>

Featured McNair Scholars Alumnus:

Jeanne Blackburn



Ph.D. - In Progress at Arizona State U.
M.A. Sociology, 2006, ASU
B.S. Sociology, 2004, CWU

Ms. Blackburn currently works at the Arizona Governor's Office for Children, Youth and Families as the Data Analyst for the Division for Substance Abuse Policy where she examines the impact of substance use on Arizona's youth and adults. Her previous experience includes research on the perceptions surrounding female-perpetrated domestic violence, including its causes and the severity of its consequences, as well as the cognitive and behavioral outcomes of children who reside with neither parent (i.e., children who live with kinship caregivers or in foster care/group home environments). Ms. Blackburn has also worked in educational research as a Research Assistant at Rio Salado College, where she also serves as an adjunct faculty member.

"I am so glad to hear that the McNair Program is back at Central Washington University! My time in the program has had profound impacts on my life and I would not be where I am today without the program and all of its faculty and support! I am excited ... for each and every one of [the CWU McNair Scholars] for embarking on a path that is sure to shape their future in rich and wonderful ways!"