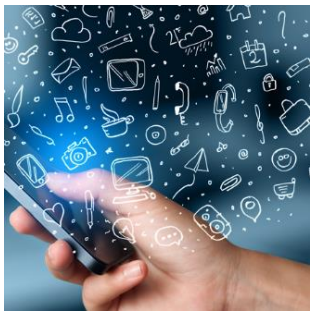


IT 381 – Web Apps for M-Commerce

General Course Syllabus

ITAM

Department of Information Technology and Administrative Management



This course will introduce concepts in developing business web apps for use in m-commerce. Web apps review and development using web app authoring/application software for various operating systems.

Prerequisites: IT 322

Credits: 4



Students will be able to . . .

Plan a mobile website.

Interpret mobile site goals, requirements, and internal specifications.

Assess the usability of a mobile website using an informal usability test.

Explain how browser compatibility can determine functionality of your site.

Assessments

Rubric-based assignments, projects, and/or exams.

Rubric-based assignments, projects, and/or exams.

Rubric-based assignments, projects, and/or exams.

Rubric-based assignments, projects, and/or exams.

Choose an appropriate platform for site development.

Rubric-based assignments, projects, and/or exams.

Design site architecture that includes appropriate security considerations.

Rubric-based assignments, projects, and/or exams.

Distinguish key components in development and testing.

Rubric-based assignments, projects, and/or exams.

Evaluate and use new technologies for mobile websites including XHTML, CSS, XML, jQuery, jQueryMobile and HTML5

Rubric-based assignments, projects, and/or exams.

Construct a plan and budget for the continued maintenance of a site.

Rubric-based assignments, projects, and/or exams.

Create a plan for implementation of a small to medium sized mobile site/app.

Rubric-based assignments, projects, and/or exams.

Create a working mobile site/app.

Rubric-based assignments, projects, and/or exams.

Specific course faculty and materials will vary by quarter. Current information can be found on my.cwu.edu.

ITAM classes are often offered in online, hybrid or traditional formats. Visit my.cwu.edu for more details or contact our office at ITAMInfo@cwu.edu.



University Policy on Academic Integrity

Academic Integrity is a standard set for this course. Students are expected to complete all of their coursework and assignments using their original words and ideas and will properly cite the words and ideas of others.

Students are also expected to be honest in their interactions with the instructor. A student found to have not upheld these expectations is subject to failing this course and shall be subject to disciplinary action or sanction. The University catalog defines the term "academic dishonesty" in all its forms including, but not limited to:

- cheating on tests;
- copying from another student's test paper;
- using materials during a test not authorized by the person giving the test;
- collaboration with any other person during a test without authority;
- knowingly obtaining, using, buying, selling, transporting, or soliciting in whole or in part the contents of an un-administered test or information about an un-administered test; bribing any other person to obtain an un-administered test or information about an un-administered test; substitution for another student or permitting any other person to substitute for oneself to take a test; plagiarism" which shall mean the appropriation of any other person's work and the unacknowledged incorporation of that work in one's own work offered for credit;
- "Collusion" which shall mean the unauthorized collaboration with any other person in preparing work offered for credit.

University Policy on Special Needs

If you have a disability that may prevent you from meeting course requirements, contact the instructor immediately to file a Student Disability Statement and to develop an Accommodation Plan.

Course requirements will not be waived but reasonable accommodations will be developed to help you meet the requirements. You are expected to work with the instructor and the CWU Disability Support Specialist to develop and implement a reasonable Accommodation Plan. For more information please visit: www.cwu.edu/disability-support/

Canvas TurnItIn

The TurnItIn feature of Canvas helps students learn to use sources and citations appropriately. TurnItIn matches the material in student papers against material on the Internet and in our database of

CWU papers. Representing the words or ideas of someone else as your own is a violation of the CWU Student Conduct Code and a serious infraction in this course. If you have questions about appropriate ways to include the words or ideas of other people in your papers, contact the instructor. Papers submitted to TurnItIn are added to the database of papers. Your instructor has the option of what papers and assignments may be submitted and/or randomly submitted to TurnItIn.

University Writing Center

Central Washington University is a community of scholars and writers who are supported by the University Writing Center. Peer consultants guide students of all disciplines and all levels toward communication that will be effective in a global and diverse environment. Visit: www.cwu.edu/learning-commons/university-writing-center for more information.

We are here to help!

Call: 509.963.2611

Email: ITAMInfo@cwu.edu

Explore: www.cwu.edu/it-management

Visit: ITAM Main Office, Shaw Smyser 223, Central Washington University,
Ellensburg WA 98926

Quality Teaching | Personal Advising | High-Demand Programs
