



LEARN. DO. LIVE.

## FY20 Budget Report

**Unit:** Business Intelligence (BI)

**Budget Owner:** David Peña-Alfaro

**E-mail Address:** David.Pena-Alfaro@cwu.edu

1. What is the mission of your unit? How does your unit contribute to the recruitment and retention of students?

The mission of the Business Intelligence unit is to provide the University with timely and accurate data and analysis. We strive to deliver trusted data and analysis efficiently, which includes raising the quality of the data in our business systems and data marts as set out in our long-term strategy.

2. Please provide position variance information for your unit/division associated with your budgeted FTE.

As of 1/27/20

	Full Year Budget Working FY20	beginning Balance Actual Final FY20	Jul Actual Final FY20	Jun Forecast Working FY20	Full Year Forecast	Full Year Budget Variance
<b>Wages &amp; Benefits</b>						
5140-CWU CWU-Classified	157,157	-	-	19,303	156,865	292
5175-CWU CWU-Exempt	100,642	-	-	18,165	153,639	(52,997)
5200-CWU CWU-Salary and Wage (Student/Tempo	-	-	-	-	121	(121)
<b>Total Wages</b>	<b>257,799</b>	-	-	<b>37,468</b>	<b>310,624</b>	<b>(52,825)</b>

### Business Intelligence

400 E University Way • Ellensburg WA 98926-7512 • Office: 509-963-2340

Bouillon 202 • Email: David.Pena-Alfaro@cwu.edu

EEO/AA/TITLE IX INSTITUTION • FOR ACCOMMODATION EMAIL: [DS@CWU.EDU](mailto:DS@CWU.EDU).

This is an electronic communication from Central Washington University.



LEARN. DO. LIVE.

Unit/Department reporting	Instructional	Exempt	Classified	Temp/Other
FY19 Headcount and FTE:				
FY20 Headcount and FTE:	0	2	3	0
FY20 Full Year Budget Variance:	(\$52,825)			
Comments:	Business Intelligence is a new functional area One classified will be hired in Feb-March 2020			

3. Identify two strategies that will assist your unit in becoming more cost efficient and effective in FY21.

1. Create synergies and partnership opportunities with Institutional Effectiveness and Information Services, yielding increased efficiencies and less duplication of efforts and resources.
2. Improve code structure without altering functionality by rethinking algorithms and business rules, streamlining size and execution time and thereby introducing additional efficiencies.

4. Provide a list of any contractual or legal obligations that your budget is committed to paying. Please include department, amount, brief description and end date (if any).

None

5. Use this space to provide information regarding three metrics your unit uses for comparison against standards, peers or to measure performance over time.

1. Number of users served by dashboards in the analytical tab
2. Number of analytical tools available to the university community
3. Number of ad-hoc analysis performed

### **Business Intelligence**

400 E University Way • Ellensburg WA 98926-7512 • Office: 509-963-2340

Bouillon 202 • Email: [David.Pena-Alfaro@cwu.edu](mailto:David.Pena-Alfaro@cwu.edu)

EEO/AA/TITLE IX INSTITUTION • FOR ACCOMMODATION EMAIL: [DS@CWU.EDU](mailto:DS@CWU.EDU).

This is an electronic communication from Central Washington University.



LEARN. DO. LIVE.

6. Complete the FY20 CWU Core Theme Budget Distribution spreadsheet and submit with this report. Briefly discuss how your unit uses funds to support one or more of CWU's five core themes:

- a. **Teaching and Learning.** BI Provides data and analysis to ASL areas, including the provost office.
- b. **Inclusiveness and Diversity-** BI provides data analysis on the diversity of our hiring processes and provides self-service analytics through the data warehouse regarding student and employee diversity.
- c. **Scholarship and Creative Expression.** BI provides data and analysis related to scholarships
- d. **Public Service and Community Engagement.** BI provides data related to community engagement
- e. **Resource Development and Stewardship** – BI maintains the data warehouse and provides analysis that helps the university properly steward its resources and operate more efficiently.

7. CWU's regional accreditor, the Northwest Commission on Colleges and Universities, requires that institutions demonstrate their adaptability and sustainability in the face of financial and other challenges. To that end, how would your unit absorb a permanent 5% cut to your 149 funds?

Business Intelligence is running a lean operation, so a cut of five percent will mean that the area will have to reduce the unit by one FTE, meaning having less capability in analysis and producing data for the campus community.

8. Optional: Is there anything in particular concerning recent trends that needs clarification?

No

### **Business Intelligence**

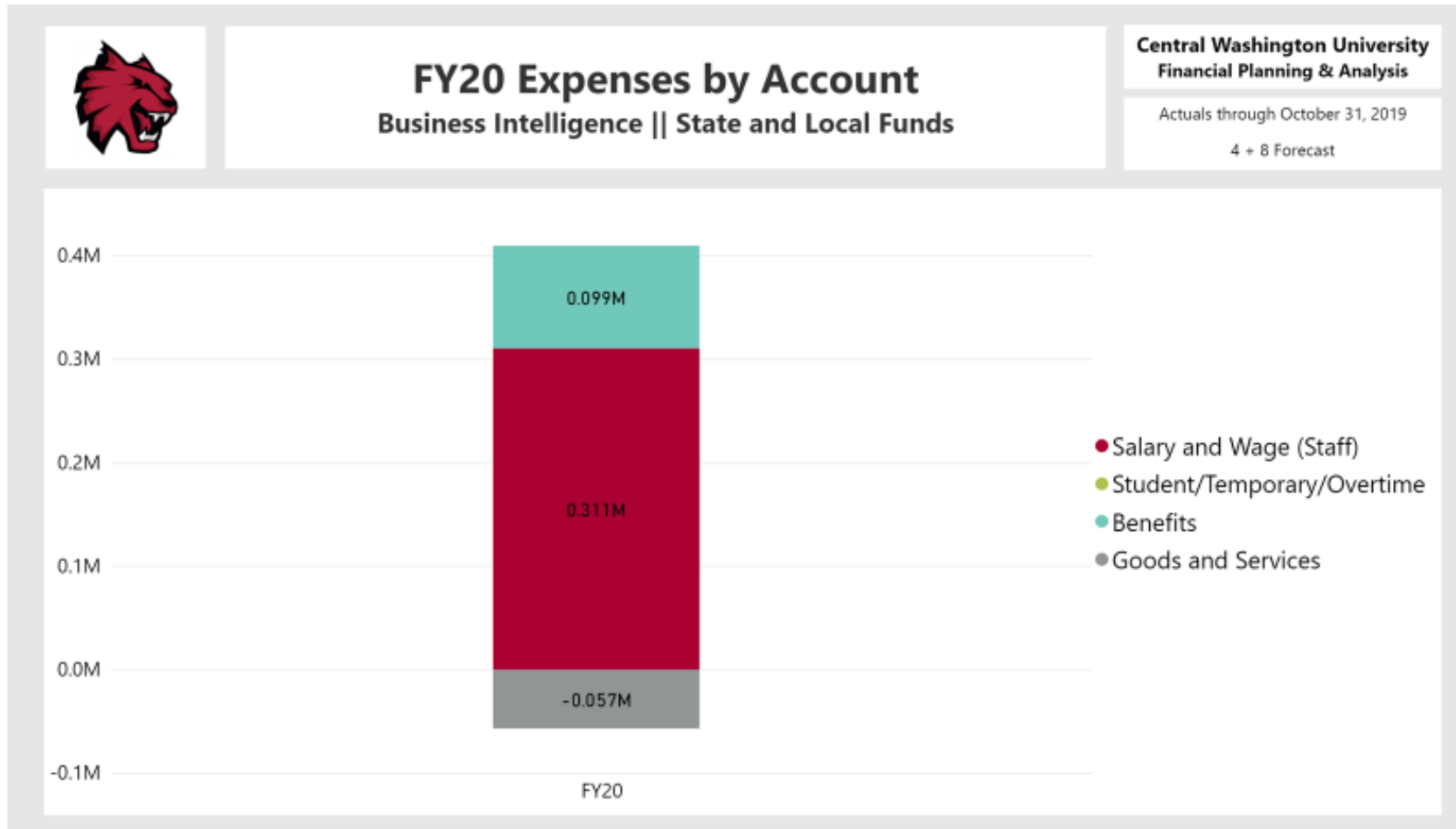
400 E University Way • Ellensburg WA 98926-7512 • Office: 509-963-2340

Bouillon 202 • Email: [David.Pena-Alfaro@cwu.edu](mailto:David.Pena-Alfaro@cwu.edu)

EEO/AA/TITLE IX INSTITUTION • FOR ACCOMMODATION EMAIL: [DS@CWU.EDU](mailto:DS@CWU.EDU).

This is an electronic communication from Central Washington University.

1. FY17-20 Expenses by Account



**Business Intelligence**

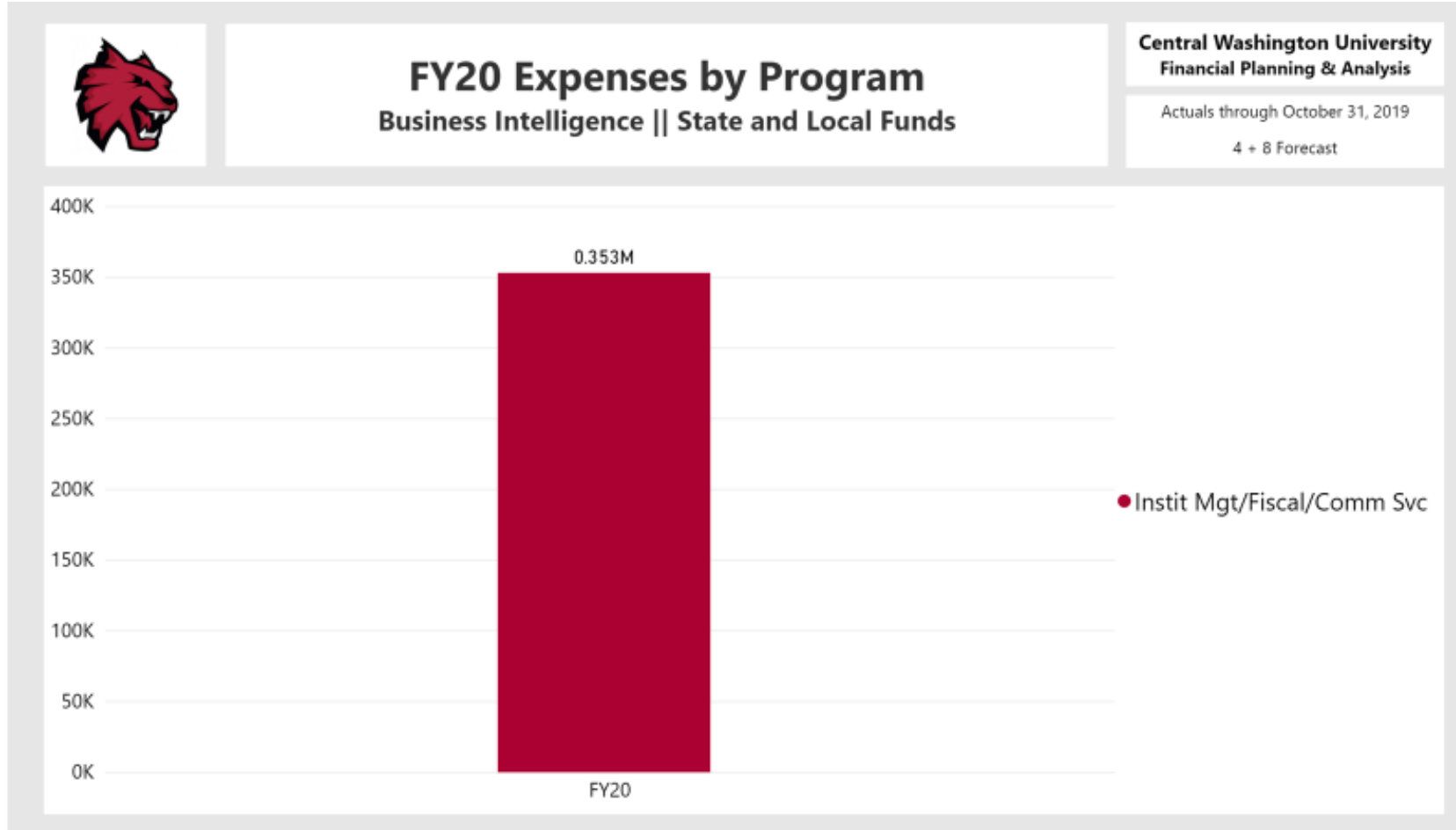
400 E University Way • Ellensburg WA 98926-7512 • Office: 509-963-2340

Bouillon 202 • Email: David.Pena-Alfaro@cwu.edu

EEO/AA/TITLE IX INSTITUTION • FOR ACCOMMODATION EMAIL: [DS@CWU.EDU](mailto:DS@CWU.EDU).

This is an electronic communication from Central Washington University.

2. FY17-20 Expenses by Program



3. FY19 Budget to Projection by Department for unit's division

**Business Intelligence**

400 E University Way • Ellensburg WA 98926-7512 • Office: 509-963-2340

Bouillon 202 • Email: David.Pena-Alfaro@cwu.edu

EEO/AA/TITLE IX INSTITUTION • FOR ACCOMMODATION EMAIL: [DS@CWU.EDU](mailto:DS@CWU.EDU).

This is an electronic communication from Central Washington University.

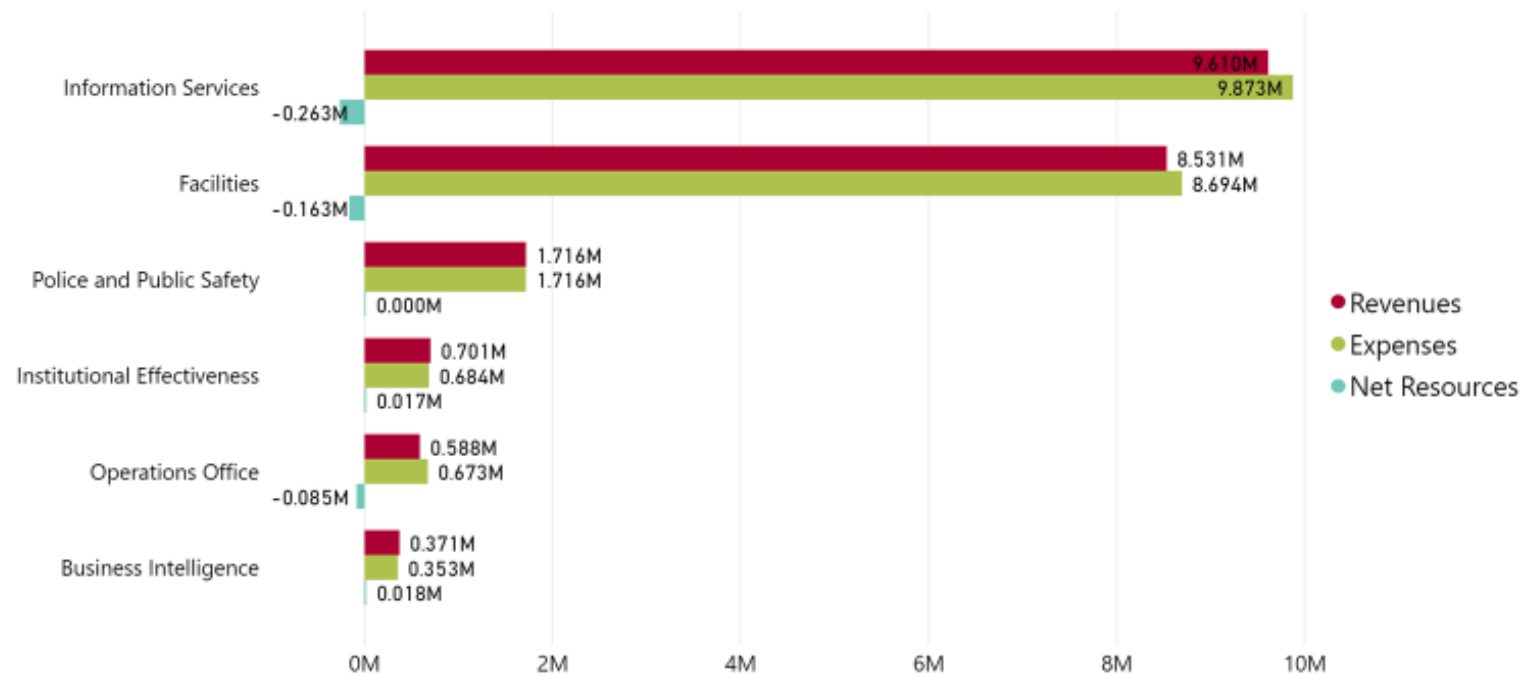


## FY20 Net Resources by Division Operations Executive Division || State and Local Funds

Central Washington University  
Financial Planning & Analysis

Actuals through October 31, 2019

4 + 8 Forecast



### Business Intelligence

400 E University Way • Ellensburg WA 98926-7512 • Office: 509-963-2340

Bouillon 202 • Email: [David.Pena-Alfaro@cwu.edu](mailto:David.Pena-Alfaro@cwu.edu)

EEO/AA/TITLE IX INSTITUTION • FOR ACCOMMODATION EMAIL: [DS@CWU.EDU](mailto:DS@CWU.EDU).

This is an electronic communication from Central Washington University.