

Emily Rogers and Elena Tucker

### The Introduction of the Monthly Newsletter

Throughout the Summer, Elena and I have been doing many projects for Academic Scheduling. One of our largest projects was the Room Audit. We walked to all the academic buildings on campus and updated information in 25Live. During that process, we were also on the lookout for attractions/art pieces of which we found many.

For the ROC that happened in October, we presented two slideshows that include those attractions/art pieces as well as the historic buildings and photographs. We have been discovering a ton of information from archives, including articles, photographs of students and people who impacted the school, and even old newspapers published by the university.

Our idea is to bring you a monthly newsletter to inform you about what we've been doing in Academic Scheduling, and highlight historic people, sports, buildings, and student life.



Benjamin F Barge  
(Central Connections, 2017)



Barge Hall in 1912 (Building Photographs, 1912)

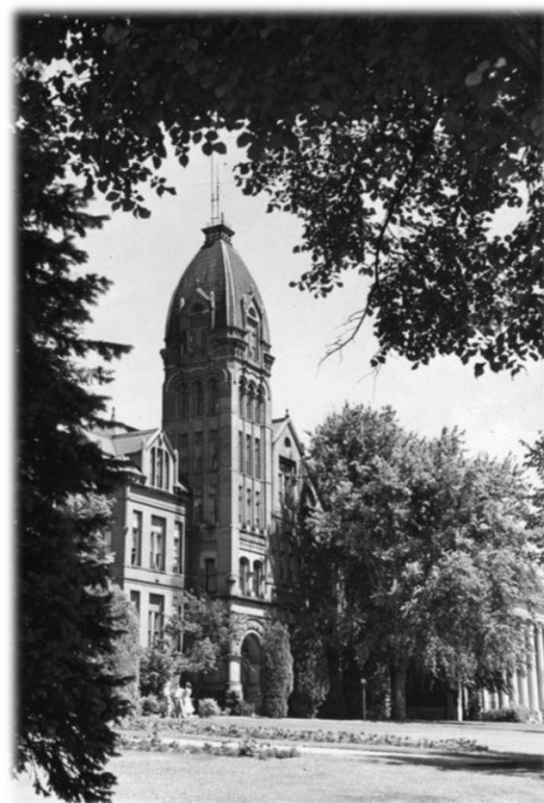
### Barge Hall

*Central Washington University's first building built on campus*

Benjamin F Barge was the first principal of the Normal School in 1891 and presided over the school's opening on September 6<sup>th</sup>, 1891 (Central Connections, 2017). Barge Hall was officially opened in 1894 and is the tallest building on campus. It definitely is an eye catcher for the university, located on Wildcat Way.

Barge was a passionate individual. The new school lacked a library, so Barge offered the students his personal books from his collection (What is in a Name, 2022).

Over many years, Barge Hall was the school's main building. Ever since the university expanded, the classrooms and gymnasium were relocated across campus.



Barge Hall in 1950 (Building Photographs, 1950)

### Central Remembered: An Anecdotal History

Elsie H. Schnebly  
1916

“My most embarrassing moment occurred in P.E, when I forgot the call to stop the marching unit and they marched right into the wall.”

## Art on Campus

When you take a walk on Central Washington University's campus you may not notice how much art is around. It is common for people to walk by many objects and not notice them. On the side of buildings, inside buildings, in the grass, and even in the ground you will find what I am talking about.

Although you may think that all the art here on campus was done by students or created by Central but that is a misunderstanding. A lot of pieces on campus are from the Washington State Arts Commission which partners with Central Washington University. We pay them to have the art here on campus.



**Ball-Nogues Studio**

Secondhand Geology, 2017

State Art Collection,  
WSAC2014.007.000



**Wick-e-up**

Deborah Butterfield, 1996

Washington State Arts  
Commission

## Did you know?



### Middle Marker of Washington State

When you take a look at a map of Washington, Ellensburg lands in the middle of the state. On the right side of Shaw-Smyser Hall is a geological marker that marks the center of the state. However, there it has been said that this is not the true mark of the middle of the state.



### Fake Windows?

Looking at the Science building you may notice the windows on the third floor. Well do not let it fool you, the left four windows are fake. From the outside it looks like there are 8 sets of windows, but if you go inside, only 4 are actually transparent.

## FALL 2022 UNIVERSITY ACADEMIC CALENDAR

All deadlines are due by the close of business on that date. Information in this document may be subject to change. If you have any questions, contact the Office of the Registrar at 509-963-3001.

### REGISTRATION AND CLASSES

April 25	Registration Assignment	Log into MyCWU to view enrollment appointment for web registration
April 25	Schedule Goes Live	View in MyCWU
April 25	Advising Begins	FALL 2022 advising
May 9	Registration Begins	For continuing students ( <i>During the assigned enrollment appointment</i> )
August 1	OPEN ENROLLMENT	Students may add/drop classes until change of schedule period ends.
September 7	Leave of Absence	Students not attending FALL quarter must submit request
Sept 16-Oct 2 until midnight	CWU Payment Plan - Open Enrollment Period	Students may split their quarter charges in three payments instead of one. A \$50 enrollment fee applies.
September 21	<b>CLASSES BEGIN</b>	<b>First day of classes for FALL</b>
September 27	Change of Schedule Period Ends and Audit Deadline	Add/Drop classes-Drops completed prior to this date or by the close of business on this date will not appear on transcripts or have tuition assessed. Deadline to declare audit grading basis.
September 27	TUITION AND FEES DUE	Check with the Cashiers Office or view your statement online for amount due. Student has 100 percent tuition liability if classes are not dropped by this date.
Sept. 28-Oct. 4	\$25 Late Registration Fee	Instructor signature required to enroll
October 4	\$75 Fee - Unpaid Tuition and Fees	A \$75 late fee will be assessed on unpaid tuition-and-course-fee balances. Student has 100 percent tuition liability.
Oct.5-Nov. 1	\$50 Late Registration Fee	Instructor and Department Chair signatures required to enroll
October 20	\$125 Fee-Unpaid Tuition and Fees	A \$125 late fee will be assessed on unpaid tuition-and-course-fee balances. Student has 100 percent tuition liability.
Nov. 2-Dec. 2	\$75 Late Registration Fee	Instructor and Department Chair signatures required to enroll
November 7	Credit/No Credit	Deadline to declare credit/no credit
November 7	Registration for WINTER	See WINTER 2023 calendar
November 11	Veterans Day	No classes/administrative offices closed
November 23-25	Thanksgiving and Native American Heritage Day Recess	No classes/administrative offices open November 23 No classes/administrative offices closed November 24-25
December 2	Course Challenge Form Deadline	Deadline to submit course challenge forms to Office of the Registrar
December 2	Classes End	Last day of class instruction
December 5	Study Day	Study Day
December 6-9	<b>FINAL EXAMS</b>	<b>See exam schedule</b>
December 9	End of Quarter	End of Quarter (last day of finals)
December 13	Grades Due	10:00 p.m. deadline for instructors to submit grades via MyCWU
54	Instructional Days per Quarter	Includes final exams and study days

### WITHDRAWAL DEADLINES

### GRADUATION DEADLINES

Oct. 20	Deadline for 50 percent reduction with complete withdrawal	Jul. 1	Deadline to apply for baccalaureate degree for FALL 2022
Nov. 7	Uncontested withdrawal period deadline	Sept. 21-27	Master's degree final folder check for FALL needs to be requested during first week of classes
Dec. 2	Hardship withdrawal petition deadline	Sept. 30	Deadline to apply for baccalaureate degree for WINTER
Dec. 2	Complete university withdrawal	Dec. 2	Complete the final "Turnitin" check. All forms submitted and fees paid for FALL graduation for Thesis Option Students
		Dec. 9	Complete all master's degree requirements for FALL graduation

[Academic Scheduling | Central Washington University \(cwu.edu\)](https://www.cwu.edu/academic-scheduling)

**December 1, 2022** - DEPARTMENTS - Return the Spring schedule with Chair and Associate Dean approval to Academic Scheduling.

**Office of the Registrar**  
 Bouillon Hall 140  
 Phone: (509) 963-3001  
 Fax: (509) 963-1230  
[reg@cwu.edu](mailto:reg@cwu.edu)

Check out Elena's slideshow on the Office of the Registrar website for more fun information about the art around campus!

Please reach out to [Academic.Scheduling@cwu.edu](mailto:Academic.Scheduling@cwu.edu) for suggestions or comments about the newsletter.